

PART OF THE SE.1/4, OF SECTION 13, T.5N., R.3W., S.L.B. & M.
LOT 1-5900 WEST STREET CHURCH SUBDIVISION

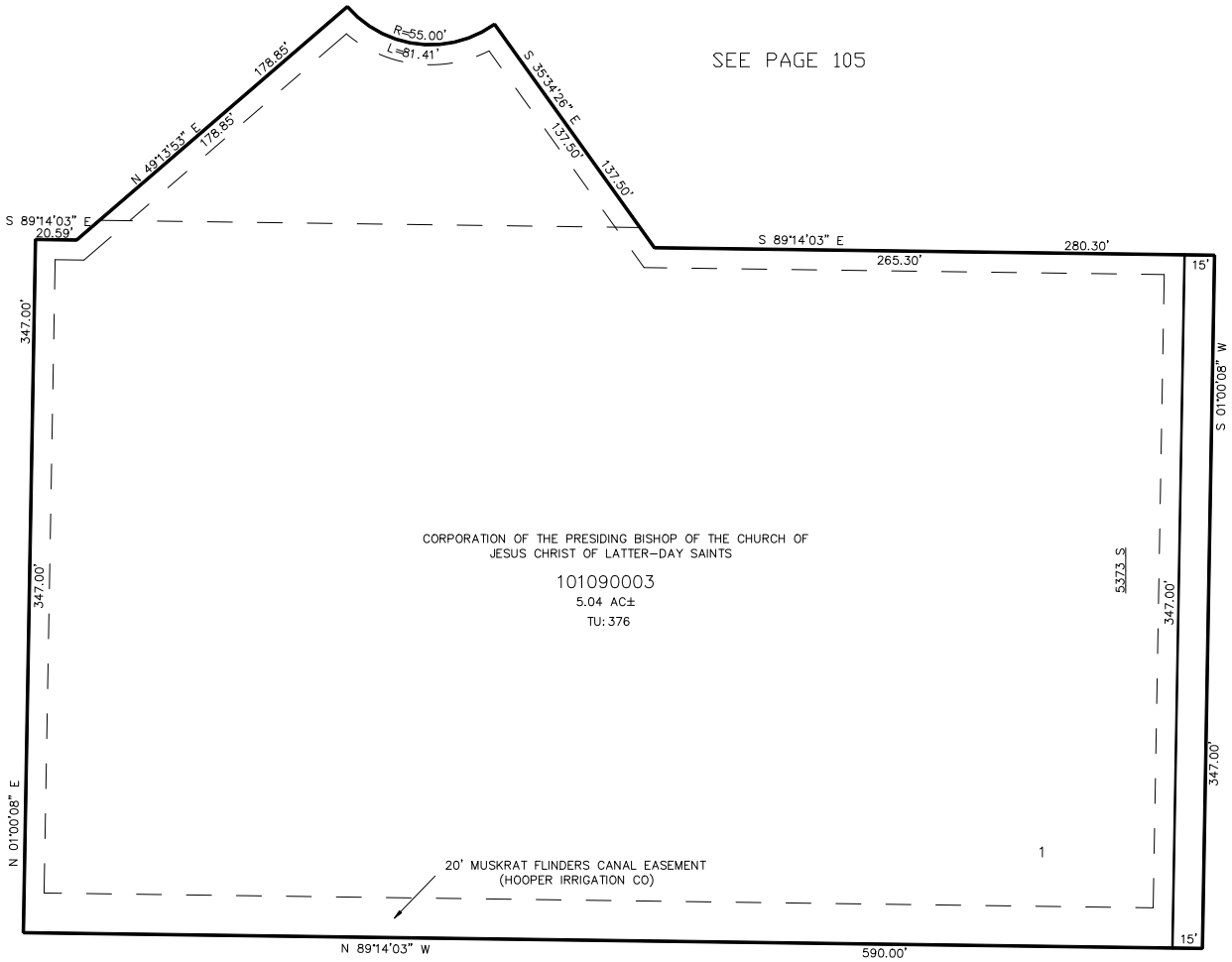
TAXING UNIT: 376

IN HOOPER CITY
SCALE 1" = 50'

5950 WEST

SEE PAGE 105

SEE PAGE 14



5900 WEST STREET/ SR 37

SEE BOOK 9, PAGE 79

SEE PAGE 14

10' UTILITY & DRAINAGE EASEMENTS EACH
SIDE OF PROPERTY LINES AS INDICATED
BY DASHED LINES EXCEPT AS OTHERWISE
SHOWN.

FOR COMPLETE ENG DATA SEE
ORIGINAL DEDICATION PLAT IN
BOOK 61, PAGE 53 OF RECORDS.